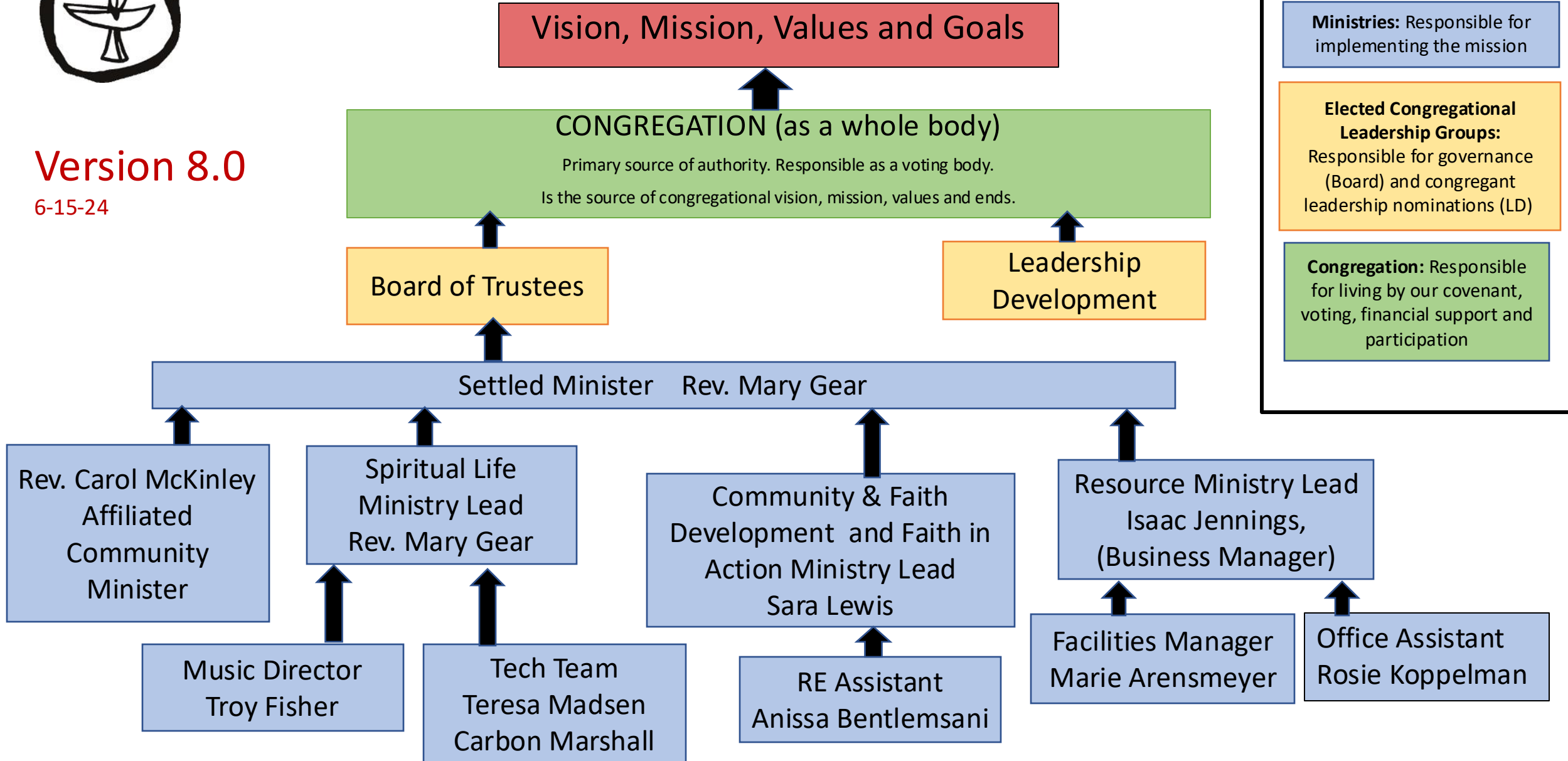




# OUUC Governance Chart

Version 8.0

6-15-24



**➔ = Accountability**

**Ministries:** Responsible for implementing the mission

**Elected Congregational Leadership Groups:** Responsible for governance (Board) and congregant leadership nominations (LD)

**Congregation:** Responsible for living by our covenant, voting, financial support and participation

# OUUC Ministry Contacts

Version 8.0

6-15-24

Spiritual Life  
Ministry Lead  
Rev. Mary Gear  
[minister@ouuc.org](mailto:minister@ouuc.org)

Music Director  
Troy Fisher  
[Musicdirector@ouuc.org](mailto:Musicdirector@ouuc.org)

Community & Faith  
Development and Faith in  
Action Ministry Lead  
Sara Lewis  
[DCFD@ouuc.org](mailto:DCFD@ouuc.org)

Resource Ministry Lead  
Isaac Jennings, Business  
Manager  
360-786-6383 x100  
[Businessmanager@ouuc.org](mailto:Businessmanager@ouuc.org)

- Teams/Groups:
- Worship
  - Worship Arts
  - Pastoral Care
  - Caring Friends
  - Memorial Receptions
  - Sanctuary Art & Aesthetics
  - Finance and Budget
  - Partner Church
  - Share the Plate

- Teams/Groups:
- Music Committee
  - Choir
  - Worship-Music

RE Assistant  
Anissa Bentlemsani  
[REassistant@ouuc.org](mailto:REassistant@ouuc.org)

Office Assistant  
Rosie Koppelman  
[office@ouuc.org](mailto:office@ouuc.org)

Teresa Madsen  
[Techcoordinator@ouuc.org](mailto:Techcoordinator@ouuc.org)  
Carbon Marshall  
[Techspecialist@ouuc.org](mailto:Techspecialist@ouuc.org)

- Teams/Groups:
- Children's Religious Ed. (RE)
  - Youth Programs
  - Adult Faith Formation
  - Small Group Ministry
  - Member Engagement
  - Hospitality
  - Community Gatherings
  - Faith in Action Leadership Council
  - Justice-focused groups

Facilities Manager  
Marie Arensmeyer  
[Facilitiesmanager@ouuc.org](mailto:Facilitiesmanager@ouuc.org)

Rev. Carol McKinley  
Affiliated Community Minister  
[cdmckinley@earthlink.net](mailto:cdmckinley@earthlink.net)

- Teams/Groups:
- Tech Team
  - Social Media
  - Worship-Tech Support
  - Website support

- Teams/Groups:
- Facilities Use & rentals
  - Buildings and Grounds
  - Administrative Support
  - Human Resources
  - Accounting, bookkeeping, payroll
  - Weekly Update
  - Calendar
  - Website support

Caregivers/Grief Group  
Community Ministry